

## Sand Filters

### Aster Series - Sand Filters



The Astral laminated 24", 30" and 36" filters offer 100% non-corrosive all fiberglass construction with a smooth exterior gel coat. A unique, patented pressure lid system is provided which eliminates the traditional nut and bolt style lid and provides a tool free, lid-locking arrangement.



These Short Commercial Sand filters are constructed of non-corrosive polyester resins and fiberglass. The interior water contact surface is an Isothalic and NPG gel-coat that provides superior protection against chemical and media abrasion. The gel-coat surface is backed with a hand-laminated layer consisting of polyester resin, chopped and woven

fiberglass matting for additional strength. All internal plumbing is assembled using a 235-psi rated PVC piping.

### Vertical Filter



These Vertical Sand filters are constructed of non-corrosive polyester resins and fiberglass. The interior water contact surface is an Isothalic and NPG gel-coat that provides superior protection against chemical and media abrasion. The gel-coat surface is backed with a hand-laminated layer consisting of polyester resin, chopped and woven fiberglass matting for additional strength. All internal plumbing is assembled using a 235-psi rated PVC piping. The large 15 3/4" lid opening provides

### Horizontal Sand Filter



The horizontal filters are constructed of polyester resins and fiberglass. All internals and connections are assembled with SCH 80 PVC. There is a 15 year limited warranty of which includes 3 years on PVC internals

and a lifetime warranty on laterals.

PART	DESCRIPTION
<b>Horizontal Filter</b>	
11319	42" X 75" HORIZONTAL FILTER - 21sqft - 2100lb sand
11325	42" X 91" HORIZONTAL FILTER - 26sqft - 2900lb sand
11330	42" X 106" HORIZONTAL FILTER - 30sqft - 3400lb sand
20895	42" X 118" HORIZONTAL FILTER - 34sqft - 3800lb sand
20896	48" X 75" HORIZONTAL FILTER - 24sqft - 1280lb gravel, 2200lb sand
20897	48" X 91" HORIZONTAL FILTER - 29sqft - 1580lb gravel, 2700lb sand
20898	48" X 106" HORIZONTAL FILTER - 34sqft - 1800lb gravel, 3200lb sand
20899	48" X 118" HORIZONTAL FILTER - 39sqft - 2100lb gravel, 3500lb sand
34634	42" X 132" HORIZONTAL FILTER 38sqft - lb gravel, lb sand
34635	42" X 144" HORIZONTAL FILTER - 42sqft - lb gravel, lb sand
34636	42" X 156" HORIZONTAL FILTER - 45sqft - lb gravel, lb sand
34637	42" X 168" HORIZONTAL FILTER - 48sqft - lb gravel, lb sand
34638	48" X 132" HORIZONTAL FILTER - 44sqft - lb gravel, lb sand
34639	48" X 144" HORIZONTAL FILTER - 48sqft - lb gravel, lb sand
34640	48" X 156" HORIZONTAL FILTER - 52sqft - lb gravel, lb sand
34641	48" X 168" HORIZONTAL FILTER - 56sqft - lb gravel, lb sand
<b>Horizontal Filter Stacking Kit</b>	
20937	42" HORIZONTAL FILTER STACKING KIT
20938	48" HORIZONTAL FILTER STACKING KIT
<b>Short Filter</b>	
6804	42" SHORT COMMERCIAL FILTER - 9.32sqft - 1620lb sand
6805	47" SHORT COMMERCIAL FILTER - 12.17sqft - 2450lb sand
27802	30" w/ 2" CONN. FIBERGLASS FILTER - 4.75sqft - 7100lb sand
27803	36" w/ 2.5" CONN. FIBERGLASS FILTER - 6.84sqft - 1100lb sand
27857	36" w/ 2" CONN. FIBERGLASS FILTER - 6.84sqft - 1100lb sand
<b>Vertical Filter</b>	
6632	63" - 4" VERTICAL FILTER - 21.64sqft - 5405 lb gravel, 1650lb sand
6633	71" - 6" VERTICAL FILTER - 27.34sqft - 6840lb gravel, 1650lb sand
6634	79" - 6" VERTICAL FILTER - 33.80sqft - 8375lb gravel, 2535lb sand
6681	55" - 4" VERTICAL FILTER - 16.58sqft - 4135lb gravel, 1100lb sand
6684	63" - 6" VERTICAL FILTER - 21.64sqft - 5405 lb gravel, 1650lb sand
11816	93" - 8" VERTICAL FILTER - 46.72sqft - 11627lb gravel, 5730lb sand
11821	93" - 6" VERTICAL FILTER - 46.72sqft - 11627lb gravel, 5730lb sand

## Multi Port & Dial Valves



### SM2-PP3-KIT- 2" Praher Dial Valve Kit

Qty	Part Number	Description
1	SM2-PP3	2" Praher Dial Valve
3	436-020	2" Male Adapter PVC
3	HS48	Gear Clamp
1	BOX-32ECT	20"x13-1/4"x11" Box

### SM-30-AO-KIT-3" Praher Dial Valve Kit

Qty	Part Number	Description
1	SM-30-AO	3" Praher Dial Valve
3	436-030	3" Male Adapter PVC
3	HS64	Gear Clamp
1	BOX-32ECT	20"x13-1/4"x11" Box



### 09848-KIT-2" Astral Dial Valve Kit

Qty	Part Number	Description
1	09848	2" Astral Dial Valve
3	436-020	2" Male Adapter PVC
3	HS48	Gear Clamp
1	BOX-32ECT	20"x13-1/4"x11" Box

### 28225-KIT-2" Astral Dial Valve Kit (36" Filters)

Qty	Part Number	Description
1	28225	2" Astral Dial Valve
3	436-020	2" Male Adapter PVC
3	HS48	Gear Clamp
1	BOX-32ECT	20"x13-1/4"x11" Box

PART	DESCRIPTION
<b>Multiport Valve - Short Filter</b>	
9848	2" ASTRAL MULTIPOINT VALVE - 30" FILTER
24840	2.5" ASTRAL MULTIPOINT VALVE - 36" 2.5" OR 42"(S)
28225	2" ASTRAL MULTIPOINT VALVE - 36" FILTER
30798	3" ASTRAL MULTIPOINT VALVE - 47"(S) FILTER
<b>Multiport Valve - Praher</b>	
SM-30-AO-KIT	3" PRAHER DIAL VALVE KIT
SM2-PP3-KIT	2" PRAHER DIAL VALVE KIT (TR100/140)
<b>Dial Valve - Astral</b>	
09848-KIT	2" ASTRAL DIAL VALVE KIT
28225-KIT	2" ASTRAL DIAL VALVE KIT (36" FILTER)

D.E. Filters

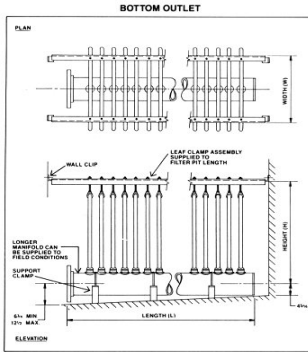


100% premium-grade stainless steel tank eliminates leaks and minimizes corrosion. Unique grid design provides most efficient D.E. filtration available.

Product	Filter Area (Sq Ft)	Optimal <sup>1</sup> Performance at this GPM	Flow Rated <sup>2</sup> at .375 - 1 GPM (per sq ft)	Turnover Capacity (In Gallons)			Media Required (Lbs)
				8 Hrs	10 Hrs	12 Hrs	
184942	NSP 36	36	72	34560	43200	51840	3.6
184943	NSP 48	48	96	46080	57600	69120	4.8
184944	NSP 60	60	120	57600	72000	86400	6
184945	NSP 72	72	144	69120	86400	103680	7.2

D.E. Filter Parts

Filter Leaves



Fabricated of chemically inert, high impact styrene. Filter leaves are rigid, strong and non-warping and feature a unique corrugated drainage pattern. The outlet and gasket assure a leakproof seal against the matching adaptor on the filtered water discharge manifold.

LEAF	L	WIDTH	HEIGHT*
24 x 45	No. of leaves X 4" + 7-1/2"	45"	33"
30 x 36	No. of leaves X 4" + 7-1/2"	36"	39"
38 x 48	No. of leaves X 5" + 7-1/2"	48"	47"
30 x 60	No. of leaves X 5" + 7-1/2"	60"	39"
48 x 60	No. of leaves X 5" + 7-1/2"	60"	57"

Quad D.E. Filters



The crystal clarity of D.E. with cartridge convenience

Quad D.E.® Filters provide the highest water clarity of D.E. with the convenience and easy-cleaning features of a cartridge filter. Four easily accessible and removable D.E. cartridges greatly increases the filter's cleaning capacity.

Features

- Four large-capacity cartridges provide maximum filter surface area for greater dirt-trapping capacity and longer periods between cleanings
- Unique internal flow path ensures optimum filtration and backwashing efficiency
- Chemical resistant, fiberglass reinforced polypropylene tank for exceptional strength and long life
- Easily removable cartridge elements make maintenance fast and easy
- Water flows through the Quad D.E.® Filters so efficiently that your pump will use less energy

Product	Filter Area (Sq Ft)	Optimal <sup>1</sup> Performance at this GPM	Flow Rated <sup>2</sup> at .375 - 1 GPM (per sq ft)	8 Hour	10 Hour	12 hour	D.E. Required (Lbs)
188592	Quad D.E. 60	60	120	57600	72000	86400	6
188593	Quad D.E. 80	80	160	76800	96000	115200	8
188594	Quad D.E. 100	100	160	76800	96000	115200	10

**Filter Accessories**

Collection Tube



Sight Glass



**Filter Media**

- Provides Superior Water Clarity
- Lowers Operating Costs
- Reduces Chloramines, Odors and Eye Burning
- Environmentally Safe, All Natural
- Reduction in Backwashing Frequency Conserves Make-up Water Consumption and Sewer Costs
- Chemical Demand and Need for Super-chlorination is Reduced.



**Zeobrite Filter Media (50lb) .....zeobrite**

Specially graded sand allows pool water to filter faster thus increasing filter cycle

- 100% natural - no chemicals added
- Specifically produced for residential and commercial sand filters
- A white sand of extreme purity, is inert, odorless, ecologically safe, and will not solidify. It will not stain, will help prevent clogging and can easily be back washed.
- Filters out dirt, dust, algae, leaves, insects and other foreign materials
- Packaged in the most durable plastic bags that can be stored outside with no UV degradation
- Meets AWWA B100 recommendations



**Sand # 15 (Gravel) (50lb) ..... F180-T1503**  
**Sand # 20 (50lb) .....F182-TFR01**

PART	DESCRIPTION
<b>Filter Media</b>	
F180-T1503	SAND # 15 GRAVEL (50lb)
F182-TFR01	SAND # 20 (50lb)
ZEOBRITE	ZEOBRITE FILTER MEDIA (50lb)
<b>Filter Accessories</b>	
ARV-KIT	BRAUKMANN AIR RELIEF VALVE KIT
SP-1055F	2" COLLECTION TUBE - FEMALE
SP-1055M	2" COLLECTION TUBE - MALE
<b>Sight Glass</b>	
SG-020	2" SIGHT GLASS
SG-030	3" SIGHT GLASS
SG-040	4" SIGHT GLASS
SG-060	6" SIGHT GLASS
SG-080	8" SIGHT GLASS