

Float Valves



CLA-VAL™ Float Valve

The Cla-Val Model 124-01 Float Valve is a non-modulating valve which accurately controls the liquid level in tanks. This valve is designed to open fully when the water level reaches a preset low point and close drip tight when the water level reaches a preset high point.

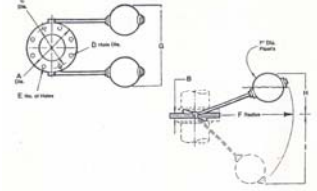
This is a hydraulically operated, diaphragm valve with the pilot control and float mechanism mounted on the cover of the main valve. The float positions the pilot control to close when the float contacts the upper stop.

The float valve is made of ductile iron with bronze trim. Comes with threaded connections, CF1-C1 float control with (2) 12" sections of PVC rod and (1) PVC float.

Note: Add (.E) to number for epoxy coating.

Miami Filter Modulating Float Valve

- Valve body constructed with Schedule 80 PVC
- Valve assembly with dual floats
- All 316 Stainless Steel components include main shaft, wafer disc, floats
- Valve disc in 20% open position with floats up and fully opened with the floats down and float arms, bolts, nuts and washers
- Single float/ red brass



DIVERSION VALVE - IN LINE STYLE

	PART #	DDV-4	DDV-6	DDV-8	DDV-10	DDV-12
-- PHYSICAL DIMENSIONS --	SIZE	4"	6"	8"	10"	12"
	A	9"	11"	13.5"	16"	19"
	B	3/4"	3/4"	1"	1"	1.5"
	C	7.5"	9.5"	11.75"	14.5"	17"
	D	3/4"	7/8"	7/8"	1"	1"
	E	8"	8"	8"	12"	12"
	F	22"	30"	30"	30"	30"
	G	16 3/4"	18 3/4"	21 1/4"	23 3/4"	27"
	H	10"	13"	13"	13"	13"
	I	16"	22"	22"	22"	22"

PART	DESCRIPTION
Float Valve	
32-510	1" FLOAT VALVE
32-512	1-1/2" FLOAT VALVE
32-514	2" FLOAT VALVE
32-516	3" FLOAT VALVE
DDV-4-IL	4" DIVERSION VALVE - IN LINE STYLE
DDV-6-IL	6" DIVERSION VALVE - IN LINE STYLE
DDV-8-IL	8" DIVERSION VALVE - IN LINE STYLE
DDV-10-IL	10" DIVERSION VALVE - IN LINE STYLE
DDV-12-IL	12" DIVERSION VALVE - IN LINE STYLE
DDV-14-IL	14" DIVERSION VALVE - IN LINE STYLE
FV-FF-MIA6	6" MIAMI FLOAT VALVE C/W FLANGES
FV-FF-MIA8	8" MIAMI FLOAT VALVE C/W FLANGES
FV-FF-MIA10	10" MIAMI FLOAT VALVE C/W FLANGES
FV-FF-MIA12	12" MIAMI FLOAT VALVE C/W FLANGES
Float Valve Part	
32-520	PVC FLOAT ROD (PER FOOT)
32-522-.5	1/2" CK2 COCK (ISOLATION VALVE)
32-522-1	1" CK2 COCK (ISOLATION VALVE)
32-523	CV CLOSING VALVE
32-524	CV OPENING VALVE

Ball Valves



Check Valves



PART	DESCRIPTION
Ball Valve	
21997	1/2" PVC BALL VALVE
21998	3/4" PVC BALL VALVE
21999	1" PVC BALL VALVE
22001	1 1/2" PVC BALL VALVE
22002	2" PVC BALL VALVE
Check Valve	
22015	1/2" SPRING CHECK
22016	3/4" SPRING CHECK
22017	1" SPRING CHECK
22019	1.5" SPRING CHECK
22020	2" SPRING CHECK

Butterfly Valves



- EPDM Seals & Zinc Plated Shafts
- Gear Operated Butterfly Valves
- PVC Butterfly Valves
comes pre-bolted with flanges
- Dominion Main Drain Surge Tank Butterfly Valve
- Stainless Steel

PART	DESCRIPTION
Butterfly	
2581	2 OR 2 ½" BUTTERFLY VALVE
2582	3" BUTTERFLY VALVE
2583	4" BUTTERFLY VALVE
2586	6" BUTTERFLY VALVE
2587	8" BUTTERFLY VALVE
15846	10" BUTTERFLY VALVE
Butterfly - Gear Op.	
8978	4" GEAR OP. BUTTERFLY VALVES
8981	6" GEAR OP. BUTTERFLY VALVES
8982	8" GEAR OP. BUTTERFLY VALVES
16063	10" GEAR OP. BUTTERFLY VALVES
8983	12" GEAR OP. BUTTERFLY VALVE
Butterfly - Main Drain Sugre Tank	
V-FF-DOM4	4" DOMINION MAIN DRAIN SURGE TANK BUTTERFLY VALVE
V-FF-DOM6	6" DOMINION MAIN DRAIN SURGE TANK BUTTERFLY VALVE
V-FF-DOM8	8" DOMINION MAIN DRAIN SURGE TANK BUTTERFLY VALVE
V-FF-DOM10	10" DOMINION MAIN DRAIN SURGE TANK BUTTERFLY VALVE
V-FF-DOM12	12" DOMINION MAIN DRAIN SURGE TANK BUTTERFLY VALVE
Butterfly - PVC	
V-FF-AST3	3" PVC BUTTERFLY VALVES
V-FF-AST4	4" PVC BUTTERFLY VALVES
V-FF-AST6	6" PVC BUTTERFLY VALVES
V-FF-AST8	8" PVC BUTTERFLY VALVES
V-FF-AST10	10" PVC BUTTERFLY VALVES
Butterfly - Stainless Steel Bolt Pack (Dominion)	
BP4DOM	4" DOMINION BUTTERFLY VALVE - SS BOLT PACK
BP6/8DOM	6" & 8" DOMINION BUTTERFLY VALVE - SS BOLT PACK
BP10DOM	10" DOMINION BUTTERFLY VALVE - SS BOLT PACK
BP12DOM	12" DOMINION BUTTERFLY VALVE - SS BOLT PACK
Butterfly - Zinc Bolt Pack	
BP3AST	3" ASTRAL BUTTERFLY VALVE - ZINC BOLT PACK
BP4AST	4" ASTRAL BUTTERFLY VALVE - ZINC BOLT PACK
BP6/83AST	6" & 8" ASTRAL BUTTERFLY VALVE - ZINC BOLT PACK

Wafer Check Valves



PVC Wafer Check Valves

Praher PVC Wafer Check Valves

- PVC/EPDM
- PVC WAFER CHECK with STAINLESS STEEL SPRING/EPDM
- PVC Spacers

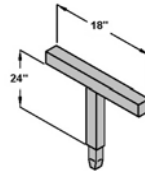
PART	DESCRIPTION
Wafer Check Valve PVC Spacer	
3-20-7	2" PVC SPACER
3-25-7	2 1/2" PVC SPACER
3-30-7	3" PVC SPACER
3-40-7	4" PVC SPACER
3-50-7	5" PVC SPACER
3-60-7	6" PVC SPACER
3-80-7	8" PVC SPACER
3-100-7	10" PVC SPACER
3-120-7	12" PVC SPACER
3-140-7	14" PVC SPACER
Wafer Check Valve Kits	
CV-FF-PRA3	3" PRAHER WAFER CHECK VALVE c/w Spacer & Flanges
CV-FF-PRA4	4" PRAHER WAFER CHECK VALVE c/w Spacer & Flanges
CV-FF-PRA6	6" PRAHER WAFER CHECK VALVE c/w Spacer & Flanges
CV-FF-PRA8	8" PRAHER WAFER CHECK VALVE c/w Spacer & Flanges
CV-FF-PRA10	10" PRAHER WAFER CHECK VALVE c/w Spacer & Flanges

Accessories

ADAPTER VALVE EXTENSION



HANDLE TEE



Flange to Flange Connection



PART	DESCRIPTION
Valve Accessories	
514VLWSA03	2" - 3" ADAPTER VALVE EXTENSION
514VLWSA04	4" ADAPTER VALVE EXTENSION
514VLWSA08	6" - 8" ADAPTER VALVE EXTENSION
514VLWSA12	10" - 12" ADAPTER VALVE EXTENSION
514TEEHNDL	HANDLE TEE SS 18" X 24"
BP-FF1	1" FLANGE TO FLANGE CONNECTION
BP-FF1.25	1-1/4" FLANGE TO FLANGE CONNECTION
BP-FF1.5	1-1/2" FLANGE TO FLANGE CONNECTION
BP-FF2	2" FLANGE TO FLANGE CONNECTION
BP-FF3	3" FLANGE TO FLANGE CONNECTION
BP-FF4	4" FLANGE TO FLANGE CONNECTION
BP-FF5	5" FLANGE TO FLANGE CONNECTION
BP-FF6	6" FLANGE TO FLANGE CONNECTION
BP-FF8	8" FLANGE TO FLANGE CONNECTION
BP-FF10	10" FLANGE TO FLANGE CONNECTION
BP-FF12	12" FLANGE TO FLANGE CONNECTION